

02081-01

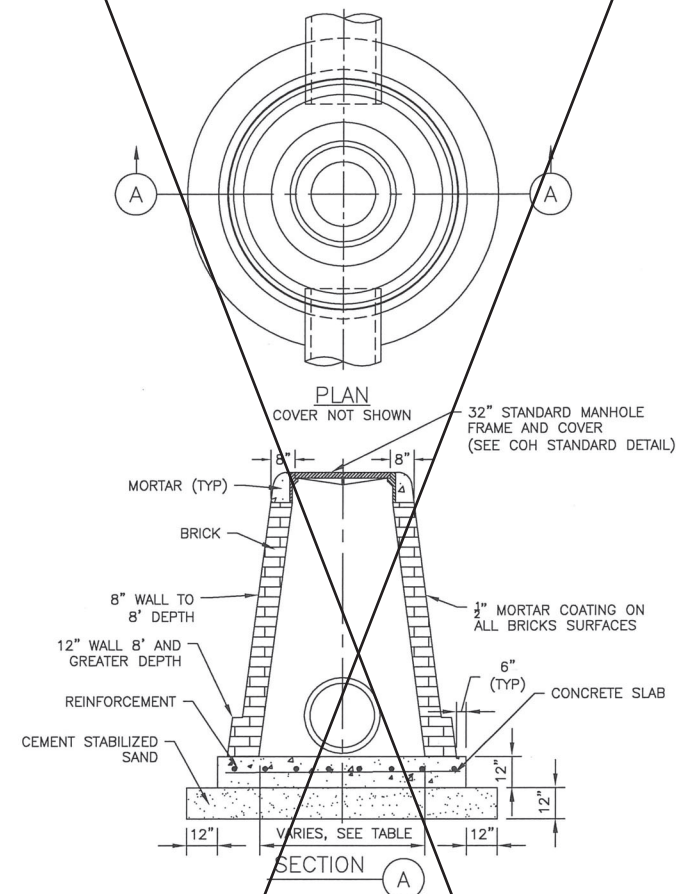


TABLE
SEWER SIZE VS MANHOLE SIZE

SEWER SIZE (INCHES)	MANHOLE BASE DIAMETER
42"	5'-0"
36"	4'-6"
30" AND LESS	4'-0"

STORM SEWER MANHOLE TYPE 'C'
FOR 42" DIAMETER RCP AND SMALLER
NTS

COH IS PHASING OUT BRICK. NEW
DETAILS TO BE POSTED END OF 2019

REFER TO COH STANDARD DETAIL
02082-12 "STORM SEWER TYPE 'C'
PRECAST ROUND MANHOLE"

02081-03

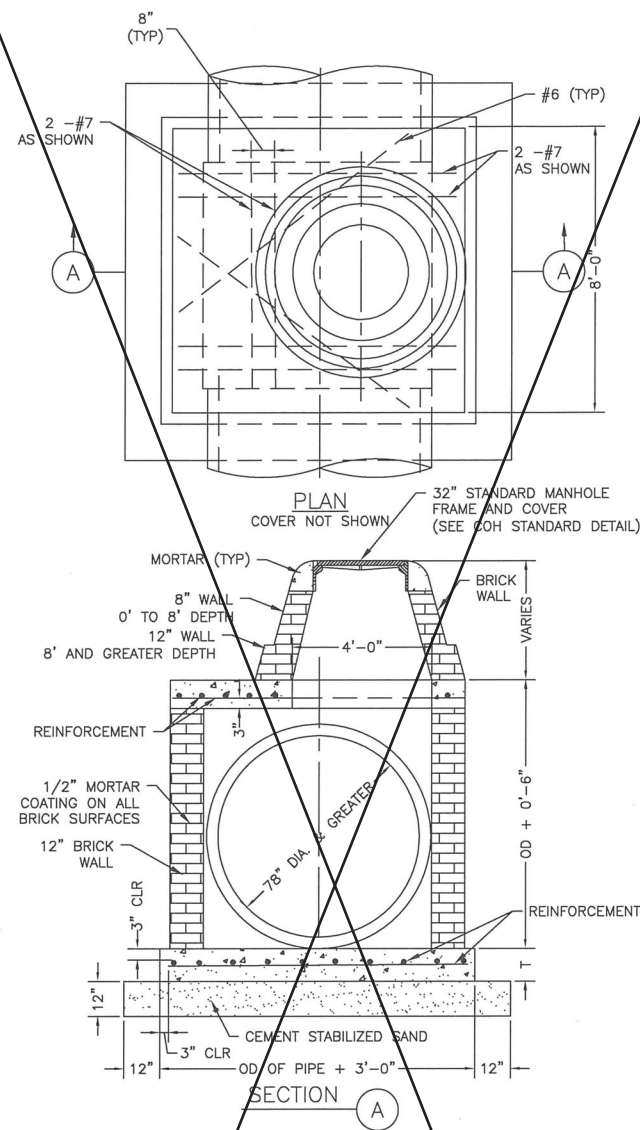


TABLE 1
PIPE DIAMETER VS SLAB THICKNESS

PIPE DIAMETER (INCHES)	SLAB THICKNESS T (INCHES)
78	12
84	12
90	13
96	14
102	14
108	15

STORM SEWER MANHOLE TYPE 'C'
FOR 78" DIAMETER RCP AND GREATER
NTS

COH IS PHASING OUT BRICK. NEW
DETAILS TO BE POSTED END OF 2019

REFER TO COH STANDARD DETAIL
02082-13 "STORM SEWER PRECAST
BOX MANHOLE"

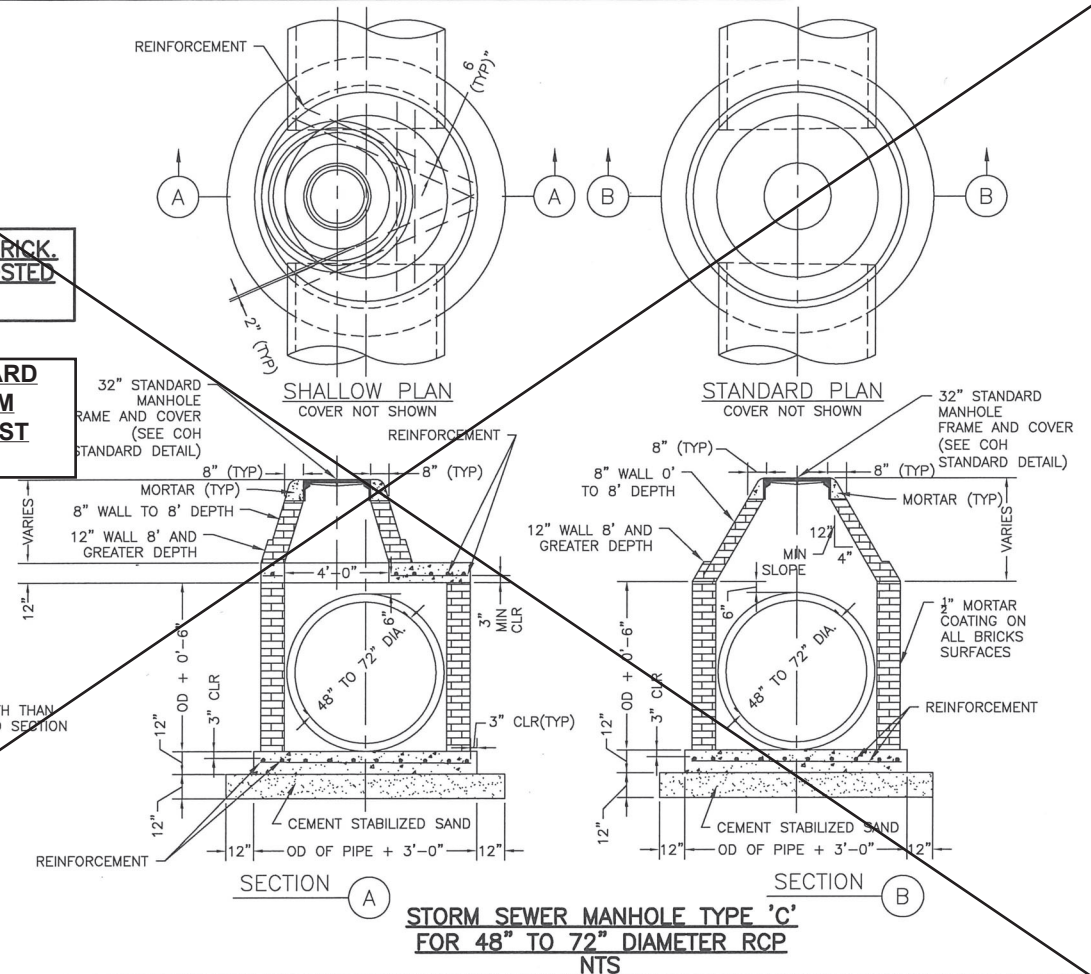
02081-02

COH IS PHASING OUT BRICK.
NEW DETAILS TO BE POSTED
END OF 2019

REFER TO COH STANDARD
DETAIL 02082-12 "STORM
SEWER TYPE 'C' PRECAST
ROUND MANHOLE"

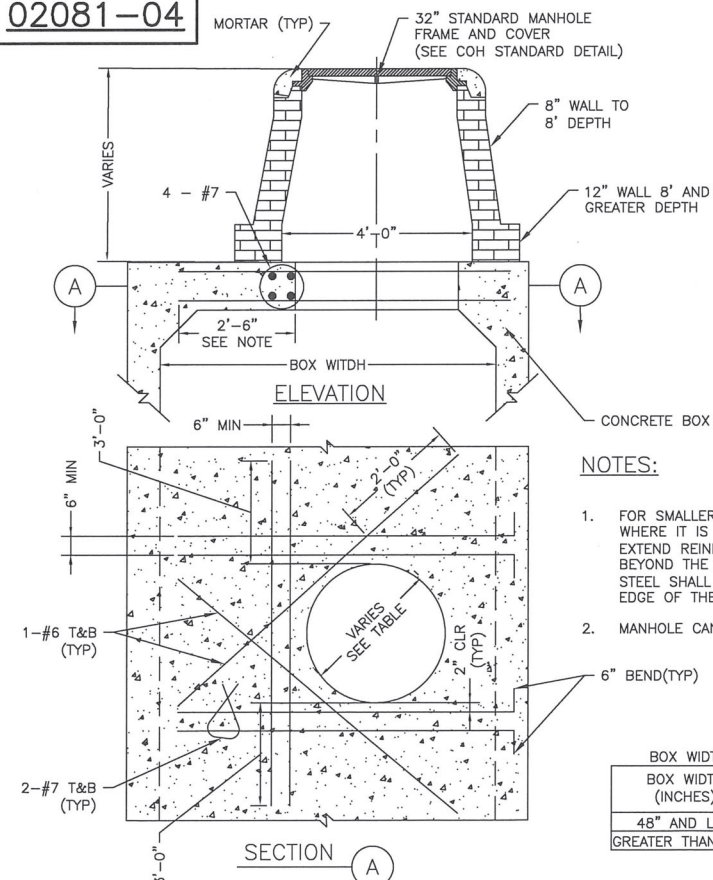
NOTE:

1. WHEN MANHOLE HAS LESS DEPTH THAN MIN. SHOWN ON TABLE 1, BUILD SECTION A OTHERWISE BUILD SECTION B.



STORM SEWER MANHOLE TYPE 'C'
FOR 48" TO 72" DIAMETER RCP
NTS

02081-04



COH IS
PHASING OUT
BRICK. NEW
DETAILS TO
BE POSTED
END OF 2019

NOTES:

1. FOR SMALLER BOX SEWER WIDTHS, WHERE IT IS NOT POSSIBLE TO EXTEND REINFORCING STEEL 2'-6" BEYOND THE OPENING, REINFORCING STEEL SHALL BE EXTENDED 3" TO THE EDGE OF THE WALL.
2. MANHOLE CAN BE PRECAST

TABLE
BOX WIDTH VS OPENING SIZE

BOX WIDTH (INCHES)	OPENING SIZE (INCHES)
48" AND LESS	36"
GREATER THAN 48"	48"

STORM SEWER MANHOLE TYPE 'C'
FOR PROPOSED CONCRETE BOX SEWER
NTS

FIRM INFORMATION

ENGINEER'S SEAL

CITY OF HOUSTON
HOUSTON PUBLIC WORKS

STORM SEWER
02081-01 THROUGH 04

APPROVED BY:

Amir T. B...
CITY ENGINEER

APPROVED BY:

Carol Haddad
DEPUTY DIRECTOR

APPROVED BY:

Carol Haddad
DIRECTOR

EFFECTIVE DATE: JUL-01-2019

FOR CITY OF HOUSTON USE ONLY

SHEET NO.